

Judging Times:

Gymkhana [Division A] - Tuesday 5:15

Western/Trail [Divisions B-M] - Saturday 8:30 AM

English/Driving [Division N-V] – Thursday 8:30 AM

Model Horse [Division W] – Wednesday 2:00 PM

**Registration Deadline: June 10, 2025**

DEPT. 106 – Jr. Horses/Ponies

ALL PREMIUMS for Divisions: A to V

\$9.00, \$7.00, \$6.00, \$5.00

Division-W PREMIUMS \$3.00, \$2.00, \$1.50, \$1.00

## Department 106 – Jr. Horses/Ponies

Superintendent

Jay Wolfe

262-224-1818

wolfman18w@yahoo.com

**Animal Arrival: Tuesday after 12:00 noon.**

**ALL ANIMALS MUST BE REGISTERED BY 9:00 AM ON WEDNESDAY**

### JUDGING:

**Gymkhana** will be run on **Tuesday at 5:15 PM** (Division A)

**Western/Trail** will be judged on **Saturday at 8:30 AM** (Divisions B-M)

**English/Driving** will be judged on **Thursday at 8:30 AM** (Divisions N-V)

**Model Horse** will be judged on **Wednesday at 2:00 PM** – Ziegler Building (Division W)

Division X – Horse/Horseless Horse Non-Animal Educational Exhibits

**\*\*See Dept. 110 Jr. Animal/Vet Science Division A\*\***

### Rules/Guidelines:

1. Exhibitor must be a member of the 4-H Horse & Pony project (which includes 4-H Horse and Horseless Horse members) or FFA and must meet the requirements of that organization in order to participate in the horse shows at the fair.
2. A negative Coggins test taken within twelve months of the last day of the fair is required. The original Coggins (along with a second copy which includes the name of the youth to be kept on file) must be handed in at the registration table in the Pleasure Horse barn when you arrive at the Fair.
3. All horses/ponies are required to stay for the entire six days of the fair. Horses/ponies that are ONLY showing in Gymkhana classes are not required to stay. Gymkhana horses/ponies can stay in a stall if stall clean up fee is paid at the time entries are submitted. At the discretion of the Superintendent and the Horse & Pony Project Board of Directors, other horses and ponies may be allowed to trailer in the shows, only if the barn is full.
4. Horses/ponies can begin to arrive on Tuesday after 12:00 noon. **ALL ANIMALS MUST BE REGISTERED BY 9:00 AM ON WEDNESDAY.** Upon arrival, the exhibitor or a representative must register the horse/pony at the registration table in the Pleasure Horse barn. Once registered, the horse/pony can be unloaded and put in its stall. All horses/ponies must be in the stall assigned to the exhibitor; any stall changes must be approved by the Superintendent or the person who assigned stalls. **ALL EXHIBITORS MUST ATTEND THE BARN MEETING AT 9:30 AM ON WEDNESDAY IN THE PLEASURE BARN.** Exhibitors will receive a copy of all barn rules at registration. These rules will also be discussed at the barn meeting. Horse/ponies must remain in or around the barn until 6:00 PM on Sunday evening and must be out of barn by 7:00 PM.

**Judging Times:**

Gymkhana [Division A] - Tuesday 5:15

Western/Trail [Divisions B-M] - Saturday 8:30 AM

English/Driving [Division N-V] – Thursday 8:30 AM

Model Horse [Division W] – Wednesday 2:00 PM

DEPT. 106 – Jr. Horses/Ponies

ALL PREMIUMS for Divisions: A to V

\$9.00, \$7.00, \$6.00, \$5.00

Division-W PREMIUMS \$3.00, \$2.00, \$1.50, \$1.00

**Registration Deadline: June 10, 2025**

5. Horses/ponies will not be permitted to enter the fair unless they are in a good state of health and do not show evidence of any contagious or infectious disease. If it is deemed necessary to consult a veterinarian, the exhibitor agrees to assume financial responsibility. Horses/ponies may be excused from the fairgrounds due to illness or injury only by a vet or the Superintendent.
6. It is the exhibitor's responsibility to make sure their animal is cared for during the fair. Only the exhibitor or designated person approved by Superintendent may care for the animal.
7. Only stallions born after January 1 of the exhibit year are eligible to be shown.
8. Exhibitors must take care of the stall that has been assigned to them, including keeping it clean during the Fair. At the end of the Fair, the exhibitor must completely clean out the stall and remove all decorations, tape, staples, etc., used to hang things in or on the stall. The stall must then be checked by show committee designee before the exhibitor leaves the Fair.
9. Fair premiums can be withheld from any exhibitor who violates these rules, or the Barn Rules distributed at registration, after being warned by the Superintendent. Violations can also result in the loss of eligibility to show at the State 4-H Expo or Gymkhana as decided by the Horse & Pony Project Board of Directors.
10. Any cruelty or abuse to any horse or pony by anyone will not be tolerated!

**Exhibitor:**

11. Only 4-H Horse & Pony project members can show in the Horseless Horse classes at Fair or qualify for the State of 4-H Expo. 4-H members must be in grades 6-13 to show a horse at State Expo but any 4-H youth can exhibit in educational classes (horse/Horseless Horse Related Project and/or Model Horse Show)
12. Any exhibitor showing a pony must enter pony classes. No crossovers allowed. A pony shall be 56" and under. The pony may be officially measured before the show.
13. Family members may share an animal as long as each exhibitor shows in the appropriate age group. However, horses/ponies can only be shown by one family member in Halter (Divisions B & N) and Walk/Trot classes.
14. An exhibitor in Grades 3-5 must enter either W-T classes or W-T-C classes but not both. Exhibitors can register for both classes if they are unsure of which they will want to show in; however, they will need to scratch classes they will not be showing in on Wednesday when they register.
15. A maximum of one horse may be shown by any exhibitor per class.

**Riding:**

16. All riders MUST WEAR a SEI approved helmet, with the safety harness securely fastened, when riding or driving the horse/pony.
17. All exhibitors must be properly clothed (i.e. boots, long pants, and long sleeves, including gymkhana classes, when showing; short sleeves (no tank tops) for practice.
18. All horses/ponies must be bridled and saddled when being ridden.
19. No riding double on any horse or pony.
20. Riding is allowed only in the warm-up arenas and show ring. In all other areas, the exhibitor MUST dismount and lead their horse/pony. On show days, riding is allowed at the walk-in designated areas.

**Judging Times:**

Gymkhana [Division A] - Tuesday 5:15

Western/Trail [Divisions B-M] - Saturday 8:30 AM

English/Driving [Division N-V] – Thursday 8:30 AM

Model Horse [Division W] – Wednesday 2:00 PM

**Registration Deadline: June 10, 2025**

DEPT. 106 – Jr. Horses/Ponies

ALL PREMIUMS for Divisions: A to V

\$9.00, \$7.00, \$6.00, \$5.00

Division-W PREMIUMS \$3.00, \$2.00, \$1.50, \$1.00

**Judging:**

21. Judging shall be according to current Wisconsin State 4-H Horse Show Guidelines and AHSA rules wherever possible. Issues not covered by these rules will be directed to the Judge and to the Show Committee.
22. All State 4-H Expo qualifying divisions will be judged by individual grade groups. Classes may be combined if there are less than five entries for a class. Any combined classes will still be judged separately by grade.
23. The show will be run in a sequence to minimize tack change between classes. Requests for tack changes are required on Wednesday. Five minutes shall be allowed for all changes. If exhibitors have potential conflicts with other projects being shown at the Fair, they must notify the Show Committee on Wednesday.
24. No one shall be allowed to enter the ring after the class has started without the consent of the judge.
25. Danish Judging will be used except for Halter (Divisions B & N), and Gymkhana (Division A). Any questions regarding judging placement contact Superintendent and/or Show Committee Chair. Do Not Approach the Judge.
26. The Superintendent and Adult 4-H Horse Leader reserve the right to limit Grand and Reserve Champion classes. Classes will be held for designated divisions if there are at least 5 horses/exhibitors selected to participate, excluding Halter classes. Depending on number of participants, we reserve the right to merge pony and horse Grand and Reserve, but only WTC or WT would be combined.

**Premiums:**

27. Premiums are as follows: \$8.00 (1<sup>st</sup> place), \$7.00 (2<sup>nd</sup> place), \$6.00 (3<sup>rd</sup> place), and \$5.00 (4<sup>th</sup> place).
28. A maximum of **two premiums** will be paid out (max total = \$16.00). The premiums will be determined based on the highest placing in an exhibitor division (showmanship, equitation, hunter hack, horsemanship, or reinsmanship) and the highest placing in a pleasure division (halter, pleasure, western riding, trail, gymkhana, driving, or obstacle driving).

The Washington County 4-H Horse Project, UW-Extension, and Fair Park, and its officials and directors, shall not be responsible for accidents or injuries.

Exhibitors who do not have their animals under control or who show poor sportsmanship may be dismissed from the ring.

Judging Times:

Gymkhana [Division A] - Tuesday 5:15

Western/Trail [Divisions B-M] - Saturday 8:30 AM

English/Driving [Division N-V] – Thursday 8:30 AM

Model Horse [Division W] – Wednesday 2:00 PM

**Registration Deadline: June 10, 2025**

DEPT. 106 – Jr. Horses/Ponies

ALL PREMIUMS for Divisions: A to V

\$9.00, \$7.00, \$6.00, \$5.00

Division-W PREMIUMS \$3.00, \$2.00, \$1.50, \$1.00

---

## GYMKHANA

---

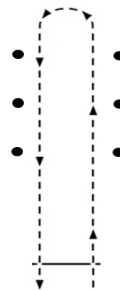
### Division A – Gymkhana Division

All divisions will be placed based on the exhibitor's time to complete and required pattern for that event. Ribbons will be awarded to all participants. Exhibitors do not need to qualify for the State 4H Gymkhana Show by placing, they can attend as they wish.

### Key Race

Class No:

1. Key Race, Grades 3-5
2. Key Race, Grades 6-8
3. Key Race, Grades 9-10
4. Key Race, Grades 11-13



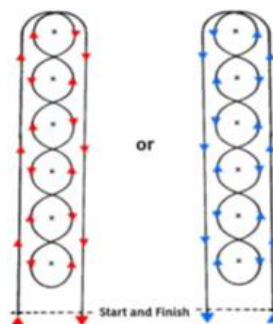
Division Section Rules:

The pattern will consist of 6 poles set 6 feet apart and 12 feet long, as shown. The rider will ride through the poles, turn around, and ride back through the poles, and across the timing line.

### Pole Bending

Class No:

5. Pole Bending, Grades 3-5
6. Pole Bending, Grades 6-8
7. Pole Bending, Grades 9-10
8. Pole Bending, Grades 11-13



Division Section Rules:

This event will have the rider run a pattern using 6 poles, as shown. The pattern can be run either left or right.

Judging Times:

Gymkhana [Division A] - Tuesday 5:15

Western/Trail [Divisions B-M] - Saturday 8:30 AM

English/Driving [Division N-V] – Thursday 8:30 AM

Model Horse [Division W] – Wednesday 2:00 PM

**Registration Deadline: June 10, 2025**

DEPT. 106 – Jr. Horses/Ponies

ALL PREMIUMS for Divisions: A to V

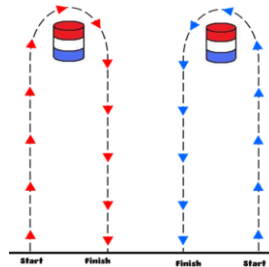
\$9.00, \$7.00, \$6.00, \$5.00

Division-W PREMIUMS \$3.00, \$2.00, \$1.50, \$1.00

## Plug

Class No:

- 9. Plug, Grades 3-5
- 10. Plug, Grades 6-8
- 11. Plug, Grades 9-10
- 12. Plug, Grades 11-13



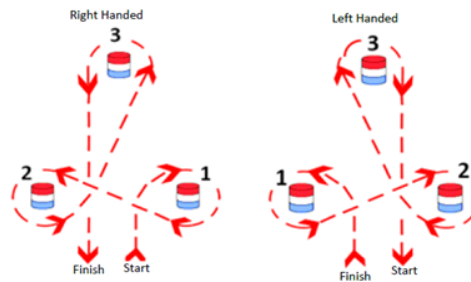
Division Section Rules:

This event will have the rider go around one barrel. The pattern can be run either left or right.

## Barrel Race

Class No:

- 13. Barrel Race, Grades 3-5
- 14. Barrel Race, Grades 6-8
- 15. Barrel Race, Grades 9-10
- 16. Barrel Race, Grades 11-13



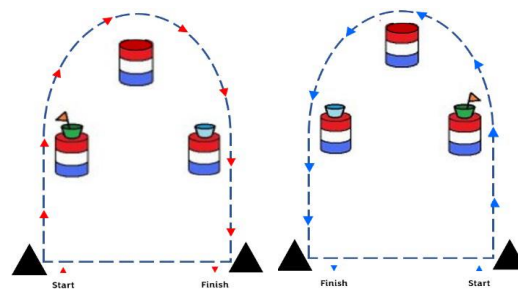
Division Section Rules:

This event will have a rider run a cloverleaf type pattern around three barrels. The pattern can be run either left or the right.

## Flag Race

Class No:

- 17. Flag & Pail, Grades 3-5
- 18. Flag & Pail, Grades 6-8
- 19. Flag & Pail, Grades 9-10
- 20. Flag & Pail, Grades 11-13



Division Section Rules:

This event will have the rider outside three barrels with a flag in hand, and deposit it into a bucket at the last barrel. The pattern can be run either left or right.

Judging Times:

Gymkhana [Division A] - Tuesday 5:15

Western/Trail [Divisions B-M] - Saturday 8:30 AM

English/Driving [Division N-V] – Thursday 8:30 AM

Model Horse [Division W] – Wednesday 2:00 PM

**Registration Deadline: June 10, 2025**

DEPT. 106 – Jr. Horses/Ponies

ALL PREMIUMS for Divisions: A to V

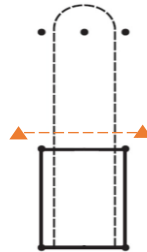
\$9.00, \$7.00, \$6.00, \$5.00

Division-W PREMIUMS \$3.00, \$2.00, \$1.50, \$1.00

## Speed And Action

Class No:

21. Speed and Action, Grades 3-5
22. Speed and Action, Grades 6-8
23. Speed and Action, Grades 9-10
24. Speed and Action, Grades 11-13



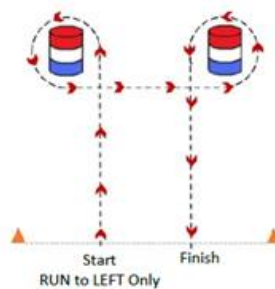
Division Section Rules:

This event will have the rider run around the barrel and then back to a 16' x 16' box outlined by flour or lime. Once in the box, you must keep the horse inside the box for 5 seconds to complete the run.

## LT Special

Class No:

25. LT Special, Grades 3-5
26. LT Special, Grades 6-8
27. LT Special, Grades 9-10
28. LT Special, Grades 11-13



Division Section Rules:

The horse and rider will cross the starting line, ride around the 1<sup>st</sup> barrel and then ride around the 2<sup>nd</sup> and then cross the finish line. **The pattern MUST be run to the left.**

Division Awards:

**A Grand/Reserve Champion** will be awarded for the night of Gymkhana. It will be based on time and points from each pattern. The top 10 clocked times from each pattern will be awarded points. The top 2 in overall points will be rewarded Grand/Reserve Champion.

< See Rule #26 under Judging >

Judging Times:

Gymkhana [Division A] - Tuesday 5:15

Western/Trail [Divisions B-M] - Saturday 8:30 AM

English/Driving [Division N-V] – Thursday 8:30 AM

Model Horse [Division W] – Wednesday 2:00 PM

**Registration Deadline: June 10, 2025**

DEPT. 106 – Jr. Horses/Ponies

ALL PREMIUMS for Divisions: A to V

\$9.00, \$7.00, \$6.00, \$5.00

Division-W PREMIUMS \$3.00, \$2.00, \$1.50, \$1.00

---

## WESTERN / TRAIL

---

### Division B – Western Halter Classes

Class No:

29. Western Horse Mares

30. Western Horse Geldings

31. Draft Horse Halter

Division Rules:

The horse, pony, or draft is judged on its confirmation based on the breed standards and suitability as a western mount. Open to all members. Placings 1<sup>st</sup>-10<sup>th</sup>.

Division Awards:

**Grand/Reserve Champion Western Halter** – 1<sup>st</sup> & 2<sup>nd</sup> place winner in classes 29-30.

### Division C – Western Showmanship

Class No:

32. Draft Horse Showmanship, Grades 3-13

33. Pony Western Showmanship, Grades 6-13

34. Pony Western Showmanship, Grades 3-5

35. Western Showmanship, Grades 12-13

36. Western Showmanship, Grades 10-11

37. Western Showmanship, Grades 8-9

38. Western Showmanship, Grades 6-7

39. Western Showmanship, Grades 3-5

Division Rules:

The exhibitor is judged on his/her ability to show the horse, pony, or draft in Western attire from the ground.

Division Awards:

**Grand/Reserve Champion – Reference Division D**

Judging Times:

Gymkhana [Division A] - Tuesday 5:15

Western/Trail [Divisions B-M] - Saturday 8:30 AM

English/Driving [Division N-V] – Thursday 8:30 AM

Model Horse [Division W] – Wednesday 2:00 PM

**Registration Deadline: June 10, 2025**

DEPT. 106 – Jr. Horses/Ponies

ALL PREMIUMS for Divisions: A to V

\$9.00, \$7.00, \$6.00, \$5.00

Division-W PREMIUMS \$3.00, \$2.00, \$1.50, \$1.00

## Division D – Horseless Horse Western Showmanship

Class No:

40. Horseless Horse Showmanship, Grades 9-13

41. Horseless Horse Showmanship, Grades 6-8

42. Horseless Horse Showmanship, Grades 3-5

Division Rules:

The exhibitor is judged on his/her ability to show the horse, pony, or draft in Western attire from the ground. This division is only open to 4-H Horseless Horse project members.

Division Awards:

**Grand/Reserve Champion Western Showmanship** – All blue-ribbon winners in classes 32-42

[Referencing Divisions C and D]

< See Rule #26 under Judging >

CONTINUED

[the balance of this page intentionally left blank]



Judging Times:

Gymkhana [Division A] - Tuesday 5:15

Western/Trail [Divisions B-M] - Saturday 8:30 AM

English/Driving [Division N-V] – Thursday 8:30 AM

Model Horse [Division W] – Wednesday 2:00 PM

**Registration Deadline: June 10, 2025**

DEPT. 106 – Jr. Horses/Ponies

ALL PREMIUMS for Divisions: A to V

\$9.00, \$7.00, \$6.00, \$5.00

Division-W PREMIUMS \$3.00, \$2.00, \$1.50, \$1.00

## Division E – Western Pleasure

Class No:

- 43. Pony Western Pleasure, Grades 6-13
- 44. Pony Western Pleasure, Grades 3-5
- 45. Pony Western Pleasure, Grades 3-5, Walk/Trot Only (Cannot enter Canter Class)
- 46. Western Pleasure, Grades 12-13
- 47. Western Pleasure, Grades 10-11
- 48. Western Pleasure, Grades 8-9
- 49. Western Pleasure, Grades 6-7
- 50. Western Pleasure, Grades 3-5
- 51. Western Pleasure, Grades 6-13, Walk/Trot Only (Cannot enter Canter Class)
- 52. Western Pleasure, Grades 3-5, Walk/Trot Only (Cannot enter Canter Class)
- 53. Western Gaited Horse, Walk/Pleasure Gait, Grades 3-13 (Cannot enter Canter Class)
- 54. Western Gaited Horse, Walk/Pleasure Gait/Canter, Grades 3-13

Division Rules:

The horse, pony, or draft is judged on its suitability as a pleasure mount. Gaits are judged at the Walk/Trot/Canter unless indicated. Western attire is required. Classes marked “Gaited” are specifically for gaited horse breeds such as Saddlebreds, Tennessee Walkers, etc.

Division Awards:

**Grand/Reserve Champion Pony Western Pleasure** – All blue-ribbon winners in **classes 43-44**

**Grand/Reserve Champion Western Pleasure** - All blue-ribbon winners in **classes 46-50, 54**

**Grand/Reserve Champion All other Division E - Reference Division F**

< See Rule #26 under Judging >

## Division F – Horseless Horse Western Pleasure

Class No:

- 55. Horseless Horse Pleasure, Walk/Trot, Grades 9-13
- 56. Horseless Horse Pleasure, Walk/Trot, Grades 6-8
- 57. Horseless Horse Pleasure, Walk/Trot, Grades 3-5

Division Rules:

The horse, pony, or draft is judged on its suitability as a pleasure mount. Gaits are judged at the Walk/Trot only. Western attire is required. This division is only open to 4-H Horseless Horse project members.

Division Awards:

**Grand/Reserve Champion All Walk/Trot Western Pleasure** – All blue-ribbon winners in classes 45, 51-53, 55-57 [referencing Divisions E and F]

< See Rule #26 under Judging >

Judging Times:

Gymkhana [Division A] - Tuesday 5:15

Western/Trail [Divisions B-M] - Saturday 8:30 AM

English/Driving [Division N-V] – Thursday 8:30 AM

Model Horse [Division W] – Wednesday 2:00 PM

**Registration Deadline: June 10, 2025**

DEPT. 106 – Jr. Horses/Ponies

ALL PREMIUMS for Divisions: A to V

\$9.00, \$7.00, \$6.00, \$5.00

Division-W PREMIUMS \$3.00, \$2.00, \$1.50, \$1.00

## Division G – Western Horsemanship

Class No:

- 58. Pony Western Horsemanship, Grades 6-13
- 59. Pony Western Horsemanship, Grades 3-5
- 60. Pony Western Horsemanship, Grades 3-5, Walk/Trot Only (Cannot enter Canter Class)
- 61. Western Horsemanship, Grades 12-13
- 62. Western Horsemanship, Grades 10-11
- 63. Western Horsemanship, Grades 8-9
- 64. Western Horsemanship, Grades 6-7
- 65. Western Horsemanship, Grades 3-5
- 66. Western Horsemanship, Grades 6-13, Walk/Trot Only (Cannot enter Canter Class)
- 67. Western Horsemanship, Grades 3-5, Walk/Trot Only (Cannot enter Canter Class)

Division Rules:

The Exhibitor is judged on his/her ability to ride the horse pony or draft. Gaits are judged at Walk/Trot/Canter unless indicated. Western attire is required.

Division Awards:

**Grand/Reserve Champion Western Horsemanship** – All blue-ribbon winners in classes 58-59, 61-65

**Grand/Reserve Champion All other Division G - Reference Division H**

< See Rule #26 under Judging >

## Division H – Horseless Horse Western/Horsemanship

Class No:

- 68. Horseless Horse Horsemanship, Walk/Trot, Grades 9-13
- 69. Horseless Horse Horsemanship, Walk/Trot, Grades 6-8
- 70. Horseless Horse Horsemanship, Walk/Trot, Grades 3-5

Division Rules:

The exhibitor is judged on his/her ability to ride the horse, pony, or draft. Western attire is required. This division is only open to 4-H Horseless Horse project members.

Division Awards:

**Grand/Reserve Champion All Walk/Trot Western Horsemanship** – All blue-ribbon winners' classes 60, 66-70. [Referencing Divisions G and H]

< See Rule #26 under Judging >

Judging Times:

Gymkhana [Division A] - Tuesday 5:15

Western/Trail [Divisions B-M] - Saturday 8:30 AM

English/Driving [Division N-V] – Thursday 8:30 AM

Model Horse [Division W] – Wednesday 2:00 PM

**Registration Deadline: June 10, 2025**

DEPT. 106 – Jr. Horses/Ponies

ALL PREMIUMS for Divisions: A to V

\$9.00, \$7.00, \$6.00, \$5.00

Division-W PREMIUMS \$3.00, \$2.00, \$1.50, \$1.00

## Division I – Western Riding

Class No:

71. Western Riding, Grades 12-13

72. Western Riding, Grades 10-11

73. Western Riding, Grades 8-9

74. Western Riding, Grades 6-7

Division Rules:

The horse and exhibitor are judged on their ability to execute a Western riding pattern.

## Division J – Discipline Rail

Class No:

75. Discipline Rail, Grades 3-5

76. Discipline Rail, Grades 6-7

77. Discipline Rail, Grades 8-9

78. Discipline Rail, Grades 10-11

79. Discipline Rail, Grades 12-13

Division Rules:

Disciplined Rail is an advanced pleasure class which tests the skills of both horse and rider as they execute specific gaits, transitions and movements as requested by the judge. The class is judged on performance and manners. Horses may be ridden in English or Western attire.

## Division K – Ranch Horse

Class No:

80. Ranch Riding, Grades 6-9

81. Ranch Riding, Grades 10-13

82. Reining, Grades 6-9

83. Reining, Grades 9-13

Division Rules:

The horse and rider are asked to perform a pattern that includes changes of gait, extension of gait, crossing logs, and lead changes. All maneuvers should be performed as if the horse were being used on a ranch.

Judging Times:

Gymkhana [Division A] - Tuesday 5:15

Western/Trail [Divisions B-M] - Saturday 8:30 AM

English/Driving [Division N-V] – Thursday 8:30 AM

Model Horse [Division W] – Wednesday 2:00 PM

**Registration Deadline: June 10, 2025**

DEPT. 106 – Jr. Horses/Ponies

ALL PREMIUMS for Divisions: A to V

\$9.00, \$7.00, \$6.00, \$5.00

Division-W PREMIUMS \$3.00, \$2.00, \$1.50, \$1.00

## Division L - Trail

Class No:

84. Trail, Grades 12-13

85. Trail, Grades 10-11

86. Trail, Grades 8-9

87. Trail, Grades 6-7

88. Trail, Grades 3-5

Division Rules:

The horse, pony, or draft is judged on its suitability as a trail mount. Horses may be ridden in English or Western attire.

## Division M – In Hand Trail

Class No:

89. Trail in Hand, Grades 3-5

90. Trail in Hand, Grades 6-7

91. Trail in Hand, Grades 8-9

92. Trail in Hand, Grades 10-11

93. Trail in Hand, Grades 12-13

Division Rules:

The In-hand trail class is a Halter Obstacle. The class usually includes the same obstacles found in the Trail.

Judging Times:

Gymkhana [Division A] - Tuesday 5:15

Western/Trail [Divisions B-M] - Saturday 8:30 AM

English/Driving [Division N-V] – Thursday 8:30 AM

Model Horse [Division W] – Wednesday 2:00 PM

**Registration Deadline: June 10, 2025**

DEPT. 106 – Jr. Horses/Ponies

ALL PREMIUMS for Divisions: A to V

\$9.00, \$7.00, \$6.00, \$5.00

Division-W PREMIUMS \$3.00, \$2.00, \$1.50, \$1.00

---

## ENGLISH / DRIVING

---

### Division N - English Halter Class

Class No:

94. English Halter Mares

95. English Halter Geldings

Division Rules:

The horse, pony, or draft is judged on its confirmation based on their breed standards and sustainability as a hunt seat mount. Open to all members. Placings 1<sup>st</sup> – 10<sup>th</sup>.

Division Awards:

**Grand/Reserve Champion English Halter** – all 1<sup>st</sup> and 2<sup>nd</sup> place winners from classes 94-95.

### Division O – English Showmanship

Class No:

96. Pony Hunt Showmanship, Grades 6-13

97. Pony Hunt Showmanship, Grades 3-5

98. Hunt Showmanship, Grades 12-13

99. Hunt Showmanship, Grades 10-11

100. Hunt Showmanship, Grades 8-9

101. Hunt Showmanship, Grades 6-7

102. Hunt Showmanship, Grades 3-5

Division Rules:

The exhibitor is judged on his/her ability to show the horse or pony in English or Hunt seat attire from the ground. (Must use bridle, no halters).

Division Awards:

**Grand/Reserve Champion - Reference Division P**

Judging Times:

Gymkhana [Division A] - Tuesday 5:15

Western/Trail [Divisions B-M] - Saturday 8:30 AM

English/Driving [Division N-V] – Thursday 8:30 AM

Model Horse [Division W] – Wednesday 2:00 PM

**Registration Deadline: June 10, 2025**

DEPT. 106 – Jr. Horses/Ponies

ALL PREMIUMS for Divisions: A to V

\$9.00, \$7.00, \$6.00, \$5.00

Division-W PREMIUMS \$3.00, \$2.00, \$1.50, \$1.00

## Division P – Horseless Horse English Showmanship

Class No:

103. Horseless Horse Showmanship, Grades 9-13

104. Horseless Horse Showmanship, Grades 6-8

105. Horseless Horse Showmanship, Grades 3-5

Division Rules:

The exhibitor is judged on his/her ability to show the horse or pony in English or Hunt seat attire from the ground. The division is only open to 4-H Horseless Horse project members. (Must use bridle, no halters)

Division Awards:

**Grand/Reserve Champion English Showmanship** – All blue-ribbon winners in classes 96-105

[Referencing Divisions O & P]

< See Rule #26 under Judging >

## Division Q – Driving Classes

Class No:

106. Pleasure Horse/Pony Driving, Grades 6-13

107. Pleasure Horse/Pony Driving, Grades 3-5\*

108. Pleasure Draft Horse Driving, Grades 3-13

109. Reinsmanship Horse/Pony, Grades 6-13

110. Reinsmanship Horse/Pony, Grades 3-5\*

111. Draft Horse Reinsmanship, Grades 3-13

112. Obstacle Driving Horse/Pony, Grades 6-13

113. Obstacle Driving Horse/Pony, Grades 3-5\*

114. Draft Horse Obstacle Driving, Grades 3-13

Division Rules:

The Exhibitor is judged on his/her ability to drive the horse, pony, or draft and the horse, pony, or draft is judged on how well it moves under harness. (Classes may be split between horse & pony for showing purposes, if needed)

\* It is required that drivers in Grade 3-5 be accompanied by an adult over 18 years of age.

Division Awards:

**Grand/Reserve Champion all driving classes** – All blue-ribbon winners' classes 106-114.

< See Rule #26 under Judging >

**Judging Times:**

Gymkhana [Division A] - Tuesday 5:15

Western/Trail [Divisions B-M] - Saturday 8:30 AM

English/Driving [Division N-V] – Thursday 8:30 AM

Model Horse [Division W] – Wednesday 2:00 PM

**Registration Deadline: June 10, 2025**

DEPT. 106 – Jr. Horses/Ponies

ALL PREMIUMS for Divisions: A to V

\$9.00, \$7.00, \$6.00, \$5.00

Division-W PREMIUMS \$3.00, \$2.00, \$1.50, \$1.00

## Division R – English Pleasure

Class No:

- 115. Pony English Pleasure, Grades 12-13
- 116. Pony English Pleasure, Grades 10-11
- 117. Pony English Pleasure, Grades 3-5 Walk/Trot Only (Cannot enter Canter Class)
- 118. English Pleasure, Grades 12-13
- 119. English Pleasure, Grades 10-11
- 120. English Pleasure, Grades 8-9
- 121. English Pleasure, Grades 6-7
- 122. English Pleasure, Grades 3-5
- 123. English Pleasure, Grades 6-13 Walk/Trot Only (Cannot enter Canter Class)
- 124. English Pleasure, Grades 3-5 Walk/Trot Only (Cannot enter Canter Class)
- 125. English Gaited Horse Walk/Pleasure Gait, Grades 3-13 (Cannot enter Canter Class)
- 126. English Gaited Horse Walk/Pleasure Gait/Canter, Grades 3-13

Division Rules:

The horse, pony, or draft is judged on its suitability as a pleasure mount. Gaits are judged at the Walk/Trot/Canter unless indicated. English/Hunt seat attire is required. Classes marked “Gaited” are specifically for gaited horse breeds such as Saddlebreds, Tennessee Walkers, etc.

Division Awards:

**Grand/Reserve Champion Pony English Pleasure** – all blue-ribbon winners in classes 115-116.

**Grand/Reserve Champion English Pleasure** – all blue-ribbon winners in classes 118-122, 126

**Grand/Reserve Champion All Other Classes – Reference Division S**

< See Rule #26 under Judging >

## Division S – Horseless Horse English Pleasure

Class No:

- 127. Horseless Horse Pleasure, Walk/Trot, Grades 9-13
- 128. Horseless Horse Pleasure, Walk/Trot, Grades 6-8
- 129. Horseless Horse Pleasure, Walk/Trot, Grades 3-5

Division Rules:

The horse, pony, or draft is judged on its suitability as a pleasure mount. Gaits are judged at the Walk/Trot only. English attire is to be worn. This division is only open to 4-H Horseless Horse project members.

Division Awards:

**Grand/Reserve Champion All Walk/Trot Pleasure** – all blue-ribbon winners in classes 117, 123-125, 127-129 [Referencing Division R and S]

< See Rule #26 under Judging >

Judging Times:

Gymkhana [Division A] - Tuesday 5:15

Western/Trail [Divisions B-M] - Saturday 8:30 AM

English/Driving [Division N-V] – Thursday 8:30 AM

Model Horse [Division W] – Wednesday 2:00 PM

**Registration Deadline: June 10, 2025**

DEPT. 106 – Jr. Horses/Ponies

ALL PREMIUMS for Divisions: A to V

\$9.00, \$7.00, \$6.00, \$5.00

Division-W PREMIUMS \$3.00, \$2.00, \$1.50, \$1.00

## Division T – English Hunt seat Equitation

Class No:

- 130. Pony Hunt seat Equitation, Grades 6-13
- 131. Pony Hunt seat Equitation, Grades 3-5
- 132. Pony Hunt seat Equitation, Grades 3-5, Walk/Trot Only (Cannot enter Canter Class)
- 133. Hunt Seat Equitation, Grades 12-13
- 134. Hunt Seat Equitation, Grades 10-11
- 135. Hunt Seat Equation, Grades 8-9
- 136. Hunt Seat Equation, Grades 6-7
- 137. Hunt Seat Equation, Grades 3-5
- 138. Hunt Seat Equation, Grades 6-13, Walk/Trot Only (Cannot enter Canter Class)
- 139. Hunt Seat Equation, Grades 3-5, Walk/Trot Only (Cannot enter Canter Class)

Division Rules:

The exhibitor is judged on his/her ability to ride the horse, pony, or draft. Gaits are judged at the Walk/Trot/Canter unless indicated. English attire is to be worn.

Division Awards:

**Grand/Reserve Champion Hunt Seat Equitation** – All blue-ribbon winners in classes 130-131, 133-137 - **[Also Reference Division U]**

< See Rule #26 under Judging >

## Division U – Horseless Horse Equitation

Class No:

- 140. Horseless Horse Equitation, Walk/Trot, Grades 9-13
- 141. Horseless Horse Equitation, Walk/Trot, Grades 6-8
- 142. Horseless Horse Equitation, Walk/Trot, Grades 3-5

Division Rules:

The exhibitor is judged on his/her ability to ride the horse, pony, or draft. English attire is required. This division is only open to 4-H Horseless Horse project members.

Division Awards:

**Grand/Reserve Champion All Walk/Trot Equitation** – All blue-ribbon winner in classes 132, 138-139, 140-142. [Referencing Divisions T and U]

< See Rule #26 under Judging >



Judging Times:

Gymkhana [Division A] - Tuesday 5:15

Western/Trail [Divisions B-M] - Saturday 8:30 AM

English/Driving [Division N-V] – Thursday 8:30 AM

Model Horse [Division W] – Wednesday 2:00 PM

**Registration Deadline: June 10, 2025**

DEPT. 106 – Jr. Horses/Ponies

ALL PREMIUMS for Divisions: A to V

\$9.00, \$7.00, \$6.00, \$5.00

Division-W PREMIUMS \$3.00, \$2.00, \$1.50, \$1.00

## Division V – Hunter Hack, Handy Hunter / Working Hunter Over Fences

Class No:

- 143. Hunter Hack, Grades 9-13
- 144. Hunter Hack, Grades 6-8
- 145. Hunter Hack, Grades 3-5
- 146. Equitation Over Fences, Ground Poles/Cross Rails, Grades 3-5
- 147. Equitation Over Fences, Ground Poles/Cross Rails, Grades 6-8
- 148. Equitation Over Fences, Ground Poles/Cross Rails, Grades 9-13
- 149. Working Hunter Over Fences, Grades 3-5\* Fences not to exceed 18"
- 150. Working Hunter Over Fences, Grades 6-8. Fences not to exceed 18"
- 151. Working Hunter Over Fences, Grades 9-13. Fences not to exceed 18"
- 152. Handy Hunter Over Fences, Grades 3-5. Fences not to exceed 18"
- 153. Handy Hunter Over Fences, Grades 6-8. Fences not to exceed 18"
- 154. Handy Hunter Over Fences, Grades 9-13. Fences not to exceed 18"
- 155. Working Hunter Over Fences, Grades 3-5. Fences not to exceed 24"
- 156. Working Hunter Over Fences, Grades 6-8. Fences not to exceed 24"
- 157. Working Hunter Over Fences, Grades 9-13. Fences not to exceed 24"
- 158. Handy Hunter Over Fences, Grades 3-5. Fences not to exceed 24"
- 159. Handy Hunter Over Fences, Grades 6-8. Fences not to exceed 24"
- 160. Handy Hunter Over Fences, Grades 9-13. Fences not to exceed 24"
- 161. Working Hunter Over Fences, Grades 3-5. Fences not to exceed 2'6"
- 162. Working Hunter Over Fences, Grades 6-8. Fences not to exceed 2'6"
- 163. Working Hunter Over Fences, Grades 9-13. Fences not to exceed 2'6"
- 164. Handy Hunter Over Fences, Grades 3-5. Fences not to exceed 2'6"
- 165. Handy Hunter Over Fences, Grades 6-8. Fences not to exceed 2'6"
- 166. Handy Hunter Over Fences, Grades 9-13. Fences not to exceed 2'6"

Division Rules:

Horse and rider combinations are judged on their ability to ride different gaits and jump fences.

English/Hunt seat attire is required.

Judging Times:

Gymkhana [Division A] - Tuesday 5:15

Western/Trail [Divisions B-M] - Saturday 8:30 AM

English/Driving [Division N-V] – Thursday 8:30 AM

Model Horse [Division W] – Wednesday 2:00 PM

**Registration Deadline: June 10, 2025**

DEPT. 106 – Jr. Horses/Ponies

ALL PREMIUMS for Divisions: A to V

\$9.00, \$7.00, \$6.00, \$5.00

Division-W PREMIUMS \$3.00, \$2.00, \$1.50, \$1.00

## Division W – Model Horse

Superintendent – Kathy Carlson

### Judging: Wednesday 2:00 PM – Ziegler Building

#### Rules/Guidelines:

Bring Model(s) in on the day of the Show. **Check-in at 1:30 PM**. Judging will start promptly at 2:00 PM in the Ziegler Building. Exhibitors may choose to have their entries on display in a locked display case. Entries on display must remain for the duration of the Fair and can be picked up Sunday evening at 7:00 PM

1. Exhibitor may enter one (1) model per class.
2. No entry changes at show. May enter day of show for now premiums.
3. A single model may be shown in more than one class. If you anticipate a tack change, please inform the Model Horse Ring Steward.
4. Stallions may not be exhibited in any Youth class.
5. Each model must have a white entry tag (1 ¾" to 1 3/32" in size) with a 4" string to fasten to a hind leg that cannot be easily removed. Exhibitor is responsible for creating their own tags.
6. Required information on entry tag: (on front) Breed and Gender of horse (on back) Name of horse and your initials.
7. Performance class set-up with more than one horse – tag only ONE horse. The remaining horses/animals are considered props.
8. Exhibitor is expected to prepare/tack up the model and to set up entry on the judging table. Verbal assistance is permitted but all hands-on work should be done by the exhibitor.
9. If you have a time conflict with other events, please notify the Model Horse Superintendent or the Model Horse Ring Steward and a youth representative for the exhibitor may show the exhibit.
10. The model horse judges are not to handle the models. Only the model owners or designated Youth representative for the exhibitor may handle model/show the exhibit.
11. There will be no talking to the judge while they are judging a class.
12. Once a class has started, only the judge and assistant may be in the ring area.
13. Model horse displays may not be larger than 24"x18" (exception is draft harness)
14. "OF" = Original Finish, no alterations made to model.
15. Recommend providing breed documentation, patterns with written explanation of what horse/handler is doing in a pattern or display.
16. The judge's decision is final. Remember, judging is only an opinion of one person, everyone has an opinion and that we can all have a different opinion. You must respect that opinion.
17. Respect and Common courtesy are required at all times. Poor sportsmanship will not be tolerated.
18. WISCONSIN STATE 4-H HORSE EXPO – Model Horse Show: Model Horse Entry forms **MUST** be given to Model Horse Superintendent or Horse/Pony Superintendent at the end of the show.

Judging Times:

Gymkhana [Division A] - Tuesday 5:15

Western/Trail [Divisions B-M] - Saturday 8:30 AM

English/Driving [Division N-V] – Thursday 8:30 AM

Model Horse [Division W] – Wednesday 2:00 PM

**Registration Deadline: June 10, 2025**

DEPT. 106 – Jr. Horses/Ponies

ALL PREMIUMS for Divisions: A to V

\$9.00, \$7.00, \$6.00, \$5.00

Division-W PREMIUMS \$3.00, \$2.00, \$1.50, \$1.00

## Costume – Grades 3-13

Class No:

1. Costume – Made by Exhibitor, Native/Historical, Grades 3-8
2. Costume - Made by Exhibitor, Native/Historical, Grades 9-13
3. Costume - Made by Exhibitor, Arabian, Grades 3-8
4. Costume – Made by Exhibitor, Arabian, Grades 9-13
5. Costume – Made by Exhibitor, Holiday/Parade, Grades 3-8
6. Costume – Made by Exhibitor, Holiday/Parade, Grades 9-13
7. Costume – Made by Exhibitor, Fantasy/Any other, Grades 3-8
8. Costume – Made by Exhibitor, Fantasy/Any other, Grades 9-13
9. Costume – Purchased, Native American/Historical/Arabian, Grades 3-13
10. Costume – Purchased, Holiday & Parade, Grades 3-13
11. Costume – Purchased, Fantasy & Any Other, Grades 3-13

Division Section Rules:

Made by Exhibitor – Exhibitors create their own fantasy or realistic costume to compete in these classes. Some model horses are sold as a set with a Native American theme, Arabian theme, etc. Exhibitor will enter these in the costume purchased classes. No crossovers between made by exhibitor and purchased costume classes.

## Breed – Grades 3-13

Class No:

12. Breed – Foal/Yearling, Stock Breeds
13. Breed – Foal/Yearling, Light Breeds
14. Breed – Foal/Yearling, Sport Breeds
15. Breed - Foal/Yearling, Pony Breeds
16. Breed - Foal/Yearling, Draft Breeds
17. Breed - Foal/Yearling, Any Other Pure/Mixed Breeds
18. Breed – Stock Breeds
19. Breed – Light Breeds
20. Breed – Sport, Carriage, or Other Sport Breeds
21. Breed – Pony Breeds
22. Breed – Draft Breeds
23. Breed – Spanish Breeds (Gaited/Non-Gaited)
24. Breed – Gaited Breeds
25. Breed – Long ears/Exotics
26. Breed – Any Other (Domestic animals/Farm animals/Wildlife)

Division Section Rules:

HALTERS/BRIDLES, NO HANDLERS. Must have appropriate breed documentation to identify the breed and description of what the entry is doing or what the horse is required to do for the breed and/or class being shown.

Judging Times:

Gymkhana [Division A] - Tuesday 5:15

Western/Trail [Divisions B-M] - Saturday 8:30 AM

English/Driving [Division N-V] – Thursday 8:30 AM

Model Horse [Division W] – Wednesday 2:00 PM

**Registration Deadline: June 10, 2025**

DEPT. 106 – Jr. Horses/Ponies

ALL PREMIUMS for Divisions: A to V

\$9.00, \$7.00, \$6.00, \$5.00

Division-W PREMIUMS \$3.00, \$2.00, \$1.50, \$1.00

## Performance – Grades 3-13

Class No:

27. Performance – Western Pleasure, Stock Type
28. Performance – Western Pleasure, English Type
29. Performance – Western Ranch Work
30. Performance – Gymkhana/Timed Events
31. Performance – Other Western Events
32. Performance – Dressage (English/Western)
33. Performance – Hunter Under Saddle, Stock Type
34. Performance – Hunter Under Saddle, English Type
35. Performance - Hunter/Jumper Over Fences
36. Performance - Saddle Seat/Park Pleasure
37. Performance – Other English Events
38. Performance – Trail – English/Western – Arena
39. Performance – Trail – English/Western – Natural
40. Performance – Any Other Performance

Division Section Rules:

These classes focus on the horse and the task it is performing. Tack is required) A doll is not required but can add realism to the display. All performance class entries should have documentation with a description and/or pattern describing the entry's performance.

## Harness/Driving

Class No:

41. Harness/Driving – Draft, Grades 3-13
42. Harness/Driving – Fine or Pleasure, Grades 3-13
43. Harness/Driving – Working, Grades 3-13

Division Section Rules:

Performance – Functionally correct harness required. A Vehicle is not required. Displays may not be larger than 24" x 18" (exception is draft harness).

Judging Times:

Gymkhana [Division A] - Tuesday 5:15

Western/Trail [Divisions B-M] - Saturday 8:30 AM

English/Driving [Division N-V] – Thursday 8:30 AM

Model Horse [Division W] – Wednesday 2:00 PM

**Registration Deadline: June 10, 2025**

DEPT. 106 – Jr. Horses/Ponies

ALL PREMIUMS for Divisions: A to V

\$9.00, \$7.00, \$6.00, \$5.00

Division-W PREMIUMS \$3.00, \$2.00, \$1.50, \$1.00

## Showmanship

Class No:

- 44. Showmanship – Draft (doll required), Grades 3-8
- 45. Showmanship – Draft (doll required), Grades 9-13
- 46. Showmanship – Western (doll required), Grades 3-8
- 47. Showmanship - Western (doll required), Grades 9-13
- 48. Showmanship – English (doll required), Grades 3-8
- 49. Showmanship – English (doll required), Grades 9-13

Division Section Rules:

Halters/bridles and appropriate dolls are to be used. Recommended providing the pattern and written explanation of what horse/handler is doing in pattern.

## Halter

Class No:

- 50. Halter (OF) – Foal/Yearling, Grades 3-8
- 51. Halter (OF) – Foal/Yearling, Grades 9-13
- 52. Halter (OF) – English Breeds, Grades 3-8
- 53. Halter (OF) – English Breeds, Grades 9-13
- 54. Halter (OF) – Western Breeds, Grades 3-8
- 55. Halter (OF) – Western Breeds, Grades 9-13
- 56. Halter (OF) – Pony Breeds, Grades 3-8
- 57. Halter (OF) – Pony Breeds, Grades 9-13
- 58. Halter (OF) – Draft Breeds, Grades 3-8
- 59. Halter (OF) – Draft Breeds, Grades 9-13
- 60. Halter (OF) – Any Other Breeds, Grades 3-8
- 61. Halter (OF) – Any Other Breeds, Grades 9-13

Division Section Rules:

These classes evaluate how a model represents the actual breed of horse. The divisions and judging criteria are derived from their real-life counterparts. Appropriate halters and bridles for breed/type of class must be used and be properly fitted to horse. (NO HANDLERS) OF = Original Factory Finish (Performance Classes).

Division Awards:

**Performance Grand Champion**

**Performance Reserve Champion**

Judging Times:

Gymkhana [Division A] - Tuesday 5:15

Western/Trail [Divisions B-M] - Saturday 8:30 AM

English/Driving [Division N-V] – Thursday 8:30 AM

Model Horse [Division W] – Wednesday 2:00 PM

**Registration Deadline: June 10, 2025**

DEPT. 106 – Jr. Horses/Ponies

ALL PREMIUMS for Divisions: A to V

\$9.00, \$7.00, \$6.00, \$5.00

Division-W PREMIUMS \$3.00, \$2.00, \$1.50, \$1.00

## Model Customized by Exhibitor

Class No:

- 62. Customized Model by Exhibitor – Realistic, Grades 3-8
- 63. Customized Model by Exhibitor – Realistic, Grades 9-13
- 64. Customized Model by Exhibitor – Unrealistic, Grades 3-8
- 65. Customized Model by Exhibitor - Unrealistic, Grades 9-13

Division Section Rules:

All entries must be made or created by Exhibitor. Model – (No Tack) Exhibitor alters any Original Factory finish such as painting, etching, sculpting a model

## Made by Exhibitor Tack/Accessories

Class No:

- 66. Made by Exhibitor - Simple Tack (Halters/Bridles), Grades 3-8
- 67. Made by Exhibitor - Simple Tack (Halters/Bridles), Grades 9-13
- 68. Made by Exhibitor - Complex Tack (Saddles/Harness), Grades 3-8
- 69. Made by Exhibitor - Complex Tack (Saddles/Harness), Grades 9-13
- 70. Made by Exhibitor - Props – (Jumps, barrels, poles, carts, etc.), Grades 3-8
- 71. Made by Exhibitor – Props – (Jumps, barrels, poles, carts, etc.), Grades 9-13
- 72. Made by Exhibitor – Any other Tack, Grades 3-8
- 73. Made by Exhibitor – Any other Tack, Grades 9-13

Division Section Rules:

Accessories and props should be in-scale. Tack should fit properly, be correct and accurate.

## Fun Classes

Class No:

- 74. Fun – My Favorite Model
- 75. Fun – Mare and Foal
- 76. Fun – Famous Horse, unique breeds, and unique colors
- 77. Fun – Conga line, Traditional/Classic/Stablemate scale \*
- 78. Fun – Collectability, Realistic/Unrealistic/CollectA/Schleich/other plastic.

Division Section Rules:

Documentation is required for famous horse, unique breeds, and unique colors. For Famous Horse: The Breyer Information card is acceptable in this class only.

\* Conga class is judged as a group and is three or more models of the same mold

Collectability usually follows a theme such as color, mold, breed, or how the models were acquired. Collectability models may be unrealistic colors.

There are no premium payments for Fun Classes (Ribbons only).

Judging Times:

Gymkhana [Division A] - Tuesday 5:15

Western/Trail [Divisions B-M] - Saturday 8:30 AM

English/Driving [Division N-V] – Thursday 8:30 AM

Model Horse [Division W] – Wednesday 2:00 PM

**Registration Deadline: June 10, 2025**

DEPT. 106 – Jr. Horses/Ponies

ALL PREMIUMS for Divisions: A to V

\$9.00, \$7.00, \$6.00, \$5.00

Division-W PREMIUMS \$3.00, \$2.00, \$1.50, \$1.00

## Cloverbuds

Class No:

79. Cloverbud – Costume

80. Cloverbud – Halter

81. Cloverbud – Performance

82. Cloverbud – My Favorite Model

Division Section Rules:

Exhibitor Grade 3 and under.

There are no premium payments for Cloverbuds

## Division X – Horse/Horseless Horse Non-Animal Educational Exhibits

**\*\*See Dept. 110 Jr. Animal/Vet Science Division A\*\***

CONTINUED

[the balance of this page intentionally left blank]

Judging Times:

Gymkhana [Division A] - Tuesday 5:15

Western/Trail [Divisions B-M] - Saturday 8:30 AM

English/Driving [Division N-V] – Thursday 8:30 AM

Model Horse [Division W] – Wednesday 2:00 PM

**Registration Deadline: June 10, 2025**

DEPT. 106 – Jr. Horses/Ponies

ALL PREMIUMS for Divisions: A to V

\$9.00, \$7.00, \$6.00, \$5.00

Division-W PREMIUMS \$3.00, \$2.00, \$1.50, \$1.00

## Premiums Chart

Department	Division group	Class description	1st	2nd	3rd	4th
106	A-V	ALL CLASSES	\$8.00	\$7.00	\$6.00	\$5.00
106	W	Model Horse	\$3.00	\$2.00	\$1.50	\$1.00
	A	Gymkhana				
	B	Western Halter Classes				
	C	Western Showmanship				
		Horseless Horse Western				
	D	Showmanship				
	E	Western Pleasure				
		Horseless Horse Western				
	F	Pleasure				
	G	Western Horsemanship				
		Horseless Horse				
	H	Western/Horsemanship				
	I	Western Riding				
	J	Discipline Rail				
	K	Ranch Horse				
	L	Trail				
	M	In Hand Trail				
	N	English Halter Class				
	O	English Showmanship				
		Horseless Horse English				
	P	Showmanship				
	Q	Driving Classes				
	R	English Pleasure				
		Horseless Horse English				
	S	Pleasure				
	T	English/Hunt seat Equitation				
	U	Horseless Horse Equitation				
		Hunter Hack/Equitation Over				
	V	Fences				
	W	Model Horse				